

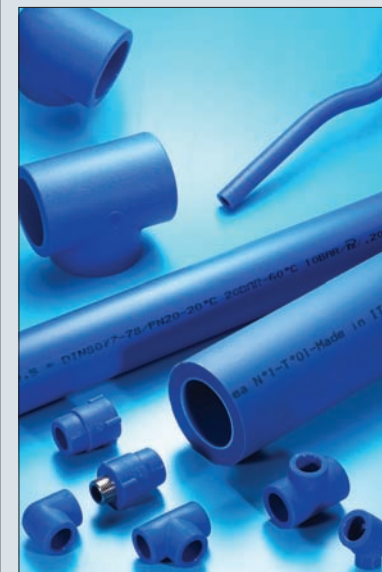


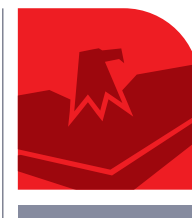
VIA RANGO, 58  
25065 LUMEZZANE BS ITALIA  
T +39 030 8920992  
F +39 030 8921739  
[www.prandelli.com](http://www.prandelli.com)  
[prandelli@prandelli.com](mailto:prandelli@prandelli.com)



TUBO E RACCORDI IN POLIPROPILENE COPOLIMERO RANDOM • PIPE AND FITTINGS IN PP-R

CATALOGO PRODOTTI PRODUCTS CATALOGUE





Ed. 5: 02/12

TUBO COPRAX PN20 (BARRE DA 4 m) • PP-R PIPE COPRAX PN 20 (4 m BARS)

MISURA mm	CONF. SACCO m	CODICE
DIMENSION mm	PACK. BAG m	CODE
20 x 3.4	100	107.00.02.0
25 x 4.2	100	107.00.02.5
32 x 5.4	40	107.00.03.2
40 x 6.7	20	107.00.04.0
50 x 8.4	20	107.00.05.0
63 x 10.5	16	107.00.06.3
75 x 12.5	12	107.00.07.5
90 x 15	8	107.00.09.0
110 x 18	8	107.00.09.5



TUBO COPRAX PN16 (BARRE DA 4 m) • PP-R PIPE COPRAX PN 16 (4 m BARS)

MISURA mm	CONF. SACCO m	CODICE
DIMENSION mm	PACK. BAG m	CODE
50 x 6.9	20	107.01.65.0
63 x 8.6	16	107.01.66.3
75 x 10.3	12	107.01.67.5
90 x 12.3	8	107.01.69.0
110 x 15.1	8	107.01.69.5
125 x 17.1	4	107.01.69.6



TUBO COPRAX PN10 (BARRE DA 4 m) • PP-R PIPE COPRAX PN 10 (4 m BARS)

MISURA mm	CONF. SACCO m	CODICE
DIMENSION mm	PACK. BAG m	CODE
32 x 2.9	40	107.01.53.2
40 x 3.7	20	107.01.54.0
50 x 4.6	20	107.01.55.0
63 x 5.8	16	107.01.56.3
75 x 6.8	12	107.01.57.5
90 x 8.2	8	107.01.59.0
110 x 10	8	107.01.59.5



SOLO PER TRASPORTO DI ACQUA FREDDA • ONLY FOR COLD WATER



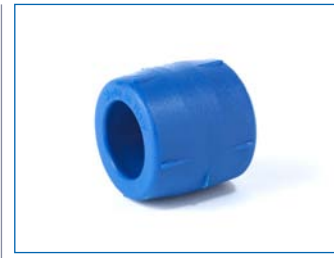
TUBO COPRAX + ALUMINIUM (BARRE DA 4 m) • PP-R PIPE COPRAX + ALUMINIUM (4 m BARS)

MISURA mm	DIAM. INTERNO mm	DIAM. ESTERNO mm	CONF. SACCO m	CODICE
DIMENSION mm	INNER DIAM. mm	OUTER DIAM. mm	PACK. BAG m	CODE
20 x 2.8	14.4	21.7	100	107.00.22.0
25 x 3.5	18.0	26.7	100	107.00.22.5
32 x 4.4	23.2	33.7	40	107.00.23.2
40 x 5.5	29.0	41.7	20	107.00.24.0
50 x 6.9	36.2	51.7	20	107.00.25.0
63 x 8.6	45.8	64.6	16	107.00.26.3
75 x 10.3	54.4	76.6	12	107.00.27.5
90 x 12.3	65.4	91.6	8	107.00.29.0
110 x 15.1	79.8	112.5	8	107.00.29.5



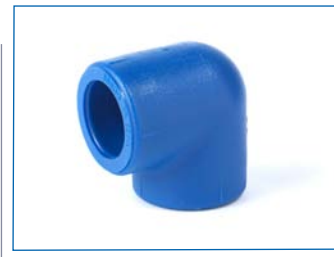
MANICOTTO • SOCKET

MISURA mm	CODICE	CONF. SACCHETTO	IMBALLO scatola
DIMENSION mm	CODE	PACKAGING bag	PACKAGING box
20	107.10.02.0	10	200
25	107.10.02.5	10	120
32	107.10.03.2	10	80
40	107.10.04.0	5	45
50	107.10.05.0	2	20
63	107.10.06.3	1	20
75	107.10.07.5	1	12
90	107.10.09.0	1	5
110	107.10.09.5	1	5
125	107.10.09.6	1	4



GOMITO 90° • ELBOW 90°

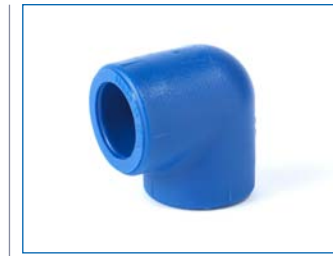
MISURA mm	CODICE	CONF. SACCHETTO	IMBALLO scatola
DIMENSION mm	CODE	PACKAGING bag	PACKAGING box
20	107.20.02.0	10	150
25	107.20.02.5	10	80
32	107.20.03.2	10	50
40	107.20.04.0	5	25



>>> continua nella pagina seguente • continues on the next page

GOMITO 90° • ELBOW 90°

MISURA mm	CODICE	CONF. SACCHETTO	IMBALLO scatola
DIMENSION mm	CODE	PACKAGING bag	PACKAGING box
>>> continua dalla pagina precedente • continues from the previous page			
50	107.20.05.0	2	14
63	107.20.06.3	1	8
75	107.20.07.5	1	4
90	107.20.09.0	1	3
110	107.20.09.5	1	2
125	107.20.09.6	1	1



GOMITO 90° M/F • ELBOW 90° M/F

MISURA mm	CODICE	CONF. SACCHETTO	IMBALLO scatola
DIMENSION mm	CODE	PACKAGING bag	PACKAGING box
20	107.26.02.0	10	200
25	107.26.02.5	10	100



GOMITO 45° • ELBOW 45°

MISURA mm	CODICE	CONF. SACCHETTO	IMBALLO scatola
DIMENSION mm	CODE	PACKAGING bag	PACKAGING box
20	107.70.02.0	10	150
25	107.70.02.5	10	100
32	107.70.03.2	10	50
40	107.70.04.0	5	30
50	107.70.05.0	2	20
63	107.70.06.3	1	10
75	107.70.07.5	1	8
90	107.70.09.0	1	3
110	107.70.09.5	1	2
125	107.70.09.6	1	2





GOMITO 45° M/F • ELBOW 45° M/F

art. <b>K71</b>	MISURA mm	CODICE	CONF. sacchetto	IMBALLO scatola
	<i>DIMENSION</i> mm	<i>CODE</i>	<i>PACKAGING</i> bag	<i>PACKAGING</i> box
	20 M x 20 F	107.71.02.0	10	200



TAPPO A CALOTTA • END CAP

art. <b>K60</b>	MISURA mm	CODICE	CONF. sacchetto	IMBALLO scatola
	<i>DIMENSION</i> mm	<i>CODE</i>	<i>PACKAGING</i> bag	<i>PACKAGING</i> box
	20	107.60.02.0	10	300
	25	107.60.02.5	10	200
	32	107.60.03.2	10	120
	40	107.60.04.0	5	60
	50	107.60.05.0	2	40
	63	107.60.06.3	1	25
	75	107.60.07.5	1	20
	90	107.60.09.0	1	10
	110	107.60.09.5	-	5
	125	107.60.09.6	-	5



RACCORDO A T • TEE

art. <b>K30</b>	MISURA mm	CODICE	CONF. sacchetto	IMBALLO scatola
	<i>DIMENSION</i> mm	<i>CODE</i>	<i>PACKAGING</i> bag	<i>PACKAGING</i> box
	20	107.30.02.0	10	120
	25	107.30.02.5	10	60
	32	107.30.03.2	5	30
	40	107.30.04.0	5	20
	50	107.30.05.0	2	12
	63	107.30.06.3	1	7

>>> continua nella pagina seguente • continues on the next page



RACCORDO A T • TEE

art. <b>K30</b>	MISURA mm	CODICE	CONF. sacchetto	IMBALLO scatola
	<i>DIMENSION</i> mm	<i>CODE</i>	<i>PACKAGING</i> bag	<i>PACKAGING</i> box
>>> continua dalla pagina precedente • continues from the previous page				
	75	107.30.07.5	1	3
	90	107.30.09.0	1	3
	110	107.30.09.5	-	2
	125	107.30.09.6	-	1



RACCORDO A T RIDOTTO • REDUCED TEE

art. <b>K35</b>	MISURA mm	CODICE	CONF. sacchetto	IMBALLO scatola
	<i>DIMENSION</i> mm	<i>CODE</i>	<i>PACKAGING</i> bag	<i>PACKAGING</i> box
	25 x 20 x 25	107.35.22.5	10	80
	32 x 20 x 32	107.35.23.2	5	40
	32 x 25 x 32	107.35.33.2	5	40
	40 x 20 x 40	107.35.24.0	5	25
	40 x 25 x 40	107.35.34.0	5	20
	40 x 32 x 40	107.35.44.0	5	20
	50 x 20 x 50	107.35.25.0	2	14
	50 x 25 x 50	107.35.35.0	2	14
	50 x 32 x 50	107.35.45.0	2	14
	50 x 40 x 50	107.35.55.0	2	12
	63 x 25 x 63	107.35.36.3	1	10
	63 x 32 x 63	107.35.46.3	1	8
	63 x 40 x 63	107.35.56.3	1	8
	63 x 50 x 63	107.35.66.3	1	8
	75 x 32 x 75	107.35.47.5	1	5
	75 x 40 x 75	107.35.57.5	1	5
	75 x 50 x 75	107.35.67.5	1	5
	75 x 63 x 75	107.35.77.5	1	5
	90 x 63 x 90	107.35.79.0	-	3
	90 x 75 x 90	107.35.89.0	-	3
	110 x 75 x 110	107.35.89.5	-	2

>>> continua nella pagina seguente • continues on the next page





RACCORDO A T RIDOTTO • REDUCED TEE

art. K35



MISURA mm	CODICE	CONF. sacchetto	IMBALLO scatola
DIMENSION mm	CODE	PACKAGING bag	PACKAGING box
>>> continua dalla pagina precedente • continues from the previous page			
110 x 90 x 110	107.35.99.5	-	2
125 x 75 x 125	107.35.89.6	-	1
125 x 90 x 125	107.35.99.6	-	1
125 x 110 x 125	107.35.09.6	-	1

RACCORDO A T RIDOTTO • REDUCED TEE

art. K36



MISURA mm	CODICE	CONF. sacchetto	IMBALLO scatola
DIMENSION mm	CODE	PACKAGING bag	PACKAGING box
25 x 20 x 20	107.36.32.0	10	70
25 x 25 x 20	107.36.22.5	10	70

RIDUZIONE • REDUCER

art. K40



MISURA mm	CODICE	CONF. sacchetto	IMBALLO scatola
DIMENSION mm	CODE	PACKAGING bag	PACKAGING box
25 x 20	107.40.22.5	10	150
32 x 20	107.40.23.2	10	100
32 x 25	107.40.33.2	10	90
40 x 20	107.40.24.0	5	60
40 x 25	107.40.34.0	5	60
40 x 32	107.40.44.0	5	50
50 x 20	107.40.25.0	2	30
50 x 25	107.40.35.0	2	30
50 x 32	107.40.45.0	2	30
50 x 40	107.40.55.0	2	30
63 x 25	107.40.36.3	1	20
63 x 32	107.40.46.3	1	20
>>> continua nella pagina seguente • continues on the next page			

RIDUZIONE • REDUCER

art. K40



MISURA mm	CODICE	CONF. sacchetto	IMBALLO scatola
DIMENSION mm	CODE	PACKAGING bag	PACKAGING box
>>> continua dalla pagina precedente • continues from the previous page			
63 x 40	107.40.56.3	1	20
63 x 50	107.40.66.3	1	20
75 x 32	107.40.47.5	1	14
75 x 40	107.40.57.5	1	14
75 x 50	107.40.67.5	1	14
75 x 63	107.40.77.5	1	14

RIDUZIONE M/F • REDUCER M/F

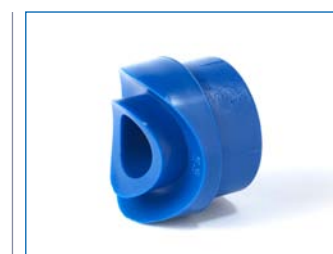
art. K41



MISURA mm	CODICE	CONF. sacchetto	IMBALLO scatola
DIMENSION mm	CODE	PACKAGING bag	PACKAGING box
25 M x 20 F	107.41.32.0	10	150
32 M x 20 F	107.41.42.0	10	150
32 M x 25 F	107.41.42.5	10	150
90 M x 63 F	107.41.96.3	1	14
90 M x 75 F	107.41.97.5	1	8
110 M x 63 F	107.41.06.3	-	8
110 M x 75 F	107.41.07.5	-	8
110 M x 90 F	107.41.09.0	-	6
125 M x 110 F	107.41.09.6	-	2

RACCORDO A SELLA • WELD-IN SADDLE


art. K47




MISURA Ø derivazione / tubo	CODICE	CONF. sacchetto	IMBALLO scatola
DIMENSION Ø way / pipe	CODE	PACKAGING bag	PACKAGING box
20 / 50	107.47.62.0	10	200
20 / 63	107.47.72.0	10	200
20 / 75	107.47.82.0	10	200
20 / 90	107.47.92.0	10	200
25 / 50	107.47.62.5	10	120
25 / 63	107.47.72.5	10	120
25 / 75	107.47.82.5	10	120
25 / 90	107.47.92.5	10	120
32 / 63	107.47.73.2	10	70
32 / 75	107.47.83.2	10	70
32 / 90	107.47.93.2	10	70
32 / 110	107.47.13.2	5	70
40 / 90	107.47.94.0	5	50
40 / 110	107.47.14.0	5	45




GIUNTO FILETTATO M • MALE ADAPTOR

art. <b>K11</b>	MISURA mm	CODICE	CONF. sacchetto	IMBALLO scatola
	<i>DIMENSION</i> mm	<i>CODE</i>	<i>PACKAGING</i> bag	<i>PACKAGING</i> carton
	20 x 1/2"	107.11.22.0	10	80
	20 x 3/4"	107.11.32.0	10	60
	20 x 3/8"	107.11.12.0	10	80
	25 x 1/2"	107.11.22.5	10	80
	25 x 3/4"	107.11.32.5	10	60
	25 x 1"	107.11.42.5	10	40
	32 x 1/2"	107.11.23.2	5	50
	32 x 3/4"	107.11.33.2	5	50
	32 x 1"	107.11.43.2	5	35
	40 x 1.1/4"	107.11.54.0	2	16
	50 x 1.1/2"	107.11.65.0	2	12
	63 x 2"	107.11.76.3	1	8
	75 x 2.1/2"	107.11.87.5	1	5
	90 x 3"	107.11.99.0	-	3
	110 x 3"	107.11.99.5	-	2
	110 x 4"	107.11.09.5	-	2
	125 x 5"	107.11.09.6	-	1


GIUNTO FILETTATO F • FEMALE ADAPTOR

art. <b>K13</b>	MISURA mm	CODICE	CONF. sacchetto	IMBALLO scatola
	<i>DIMENSION</i> mm	<i>CODE</i>	<i>PACKAGING</i> bag	<i>PACKAGING</i> carton
	20 x 1/2"	107.13.22.0	10	100
	20 x 3/4"	107.13.32.0	10	60
	25 x 1/2"	107.13.22.5	10	100
	25 x 3/4"	107.13.32.5	10	60
	25 x 1"	107.13.42.5	10	40
	32 x 1/2"	107.13.23.2	5	60
	32 x 3/4"	107.13.33.2	5	60
	32 x 1"	107.13.43.2	5	40
	40 x 1.1/4"	107.13.54.0	2	16
	50 x 1.1/2"	107.13.65.0	2	14
	63 x 2"	107.13.76.3	1	10
	75 x 2.1/2"	107.13.87.5	1	6
	90 x 3"	107.13.99.0	-	3
	110 x 3"	107.13.99.5	-	2
	110 x 4"	107.13.09.5	-	2
	125 x 5"	107.13.09.6	-	1

GIUNTO M FILETTATO M • MALE ADAPTOR (MALE)

art. <b>K12</b>	MISURA mm	CODICE	CONF. sacchetto	IMBALLO scatola
	<i>DIMENSION</i> mm	<i>CODE</i>	<i>PACKAGING</i> bag	<i>PACKAGING</i> carton
	20 x 1/2"	107.12.22.0	10	80
	20 x 3/4"	107.12.32.0	10	60
	25 x 1/2"	107.12.22.5	10	80
	25 x 3/4"	107.12.32.5	10	60
	25 x 1"	107.12.42.5	10	40
	32 x 1/2"	107.12.23.2	5	70
	32 x 3/4"	107.12.33.2	5	45
	32 x 1"	107.12.43.2	5	35
	40 x 1.1/4"	107.12.54.0	2	16
	50 x 1.1/2"	107.12.65.0	2	14
	63 x 2"	107.12.76.3	1	8
	75 x 2.1/2"	107.12.87.5	1	5

GIUNTO M FILETTATO F • FEMALE ADAPTOR (MALE)

art. <b>K14</b>	MISURA mm	CODICE	CONF. sacchetto	IMBALLO scatola
	<i>DIMENSION</i> mm	<i>CODE</i>	<i>PACKAGING</i> bag	<i>PACKAGING</i> carton
	20 x 1/2"	107.14.22.0	10	100
	20 x 3/4"	107.14.32.0	10	70
	25 x 1/2"	107.14.22.5	10	100
	25 x 3/4"	107.14.32.5	10	70
	32 x 1/2"	107.14.23.2	5	45
	32 x 3/4"	107.14.33.2	5	45
	32 x 1"	107.14.43.2	5	50
	40 x 1.1/4"	107.14.54.0	2	18
	50 x 1.1/2"	107.14.65.0	2	14
	63 x 2"	107.14.76.3	1	10
	75 x 2.1/2"	107.14.87.5	1	6





GOMITO 90° FILETTATO M • MALE ELBOW 90°

art. **K21**

MISURA mm	CODICE	CONF. sacchetto	IMBALLO scatola
<i>DIMENSION</i> mm	<i>CODE</i>	<i>PACKAGING</i> bag	<i>PACKAGING</i> box
20 x 1/2"	107.21.22.0	10	80
25 x 3/4"	107.21.32.5	10	50
32 x 1"	107.21.43.2	5	30



RACCORDO A T FILETTATO M • MALE TEE

art. **K31**

MISURA mm	CODICE	CONF. sacchetto	IMBALLO scatola
<i>DIMENSION</i> mm	<i>CODE</i>	<i>PACKAGING</i> bag	<i>PACKAGING</i> box
20 x 1/2" x 20	107.31.22.0	10	70
25 x 3/4" x 25	107.31.32.5	10	40
32 x 1" x 32	107.31.43.2	5	25



GOMITO 90° FILETTATO F • FEMALE ELBOW 90°

art. **K23**

MISURA mm	CODICE	CONF. sacchetto	IMBALLO scatola
<i>DIMENSION</i> mm	<i>CODE</i>	<i>PACKAGING</i> bag	<i>PACKAGING</i> box
20 x 1/2"	107.23.22.0	10	80
25 x 1/2"	107.23.22.5	10	80
25 x 3/4"	107.23.32.5	10	50
32 x 3/4"	107.23.33.2	5	35
32 x 1"	107.23.43.2	5	30



RACCORDO A T FILETTATO F • FEMALE TEE

art. **K33**

MISURA mm	CODICE	CONF. sacchetto	IMBALLO scatola
<i>DIMENSION</i> mm	<i>CODE</i>	<i>PACKAGING</i> bag	<i>PACKAGING</i> box
20 x 1/2" x 20	107.33.22.0	10	80
25 x 1/2" x 25	107.33.22.5	10	70
25 x 3/4" x 25	107.33.32.5	10	40
32 x 1/2" x 32	107.33.23.2	5	25
32 x 3/4" x 32	107.33.33.2	5	25
32 x 1" x 32	107.33.43.2	5	25



GOMITO 90° M FILETTATO F • FEMALE ELBOW 90° (MALE)

art. **K24**

MISURA mm	CODICE	CONF. sacchetto	IMBALLO scatola
<i>DIMENSION</i> mm	<i>CODE</i>	<i>PACKAGING</i> bag	<i>PACKAGING</i> box
20 x 1/2"	107.24.22.0	10	80

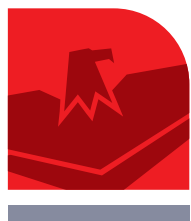


GOMITO 90° FILETTATO F C/STAFFA • FEMALE FLANGED WALL UNION 90°

art. **K83**

MISURA mm	CODICE	CONF. sacchetto	IMBALLO scatola
<i>DIMENSION</i> mm	<i>CODE</i>	<i>PACKAGING</i> bag	<i>PACKAGING</i> box
20 x 1/2"	107.83.22.0	10	60





GOMITO 90° FILETTATO F C/STAFFA PER SUPPORTO • FEMALE FLANGED WALL UNION 90° FOR METAL HOLDER

art. <b>K84</b>	MISURA mm	CODICE	CONF. sacchetto	IMBALLO scatola
	<i>DIMENSION</i> mm	<i>CODE</i>	<i>PACKAGING</i> bag	<i>PACKAGING</i> box
	20 x 1/2"	107.84.22.0	10	80



MODULO PER GRUPPI ESTERNI • MODULE FOR EXTERNAL GROUPS

art. <b>K87</b>	MISURA mm	CODICE	CONF. sacchetto	IMBALLO scatola
	<i>DIMENSION</i> mm	<i>CODE</i>	<i>PACKAGING</i> bag	<i>PACKAGING</i> box
	20 x 1/2"	107.87.22.0	2	12



COPIA GOMITI 90° FILET. F C/STAFFA E SUPPORTO METALLICO • COUPLE OF FEMALE FLANGED WALL UNION W/METAL HOLDER

art. <b>K85</b>	MISURA mm	CODICE	CONF. sacchetto	IMBALLO scatola
	<i>DIMENSION</i> mm	<i>CODE</i>	<i>PACKAGING</i> bag	<i>PACKAGING</i> box
	20 x 1/2"	107.85.22.0	1	16



Solo supporto metallico • Metal holder only

	-	104.90.20.1	10	-
--	---	-------------	----	---

CURVA AMPIO RAGGIO • LARGE BEND

art. <b>K28</b>	MISURA mm	CODICE	CONF. sacchetto	IMBALLO scatola
	<i>DIMENSION</i> mm	<i>CODE</i>	<i>PACKAGING</i> bag	<i>PACKAGING</i> box
	20 x 20	107.28.02.0	10	100



GOMITO 90° FILETTATO F RIBASSATO C/STAFFA • FEMALE LOWERED FLANGED WALL UNION 90°

art. <b>K86</b>	MISURA mm	CODICE	CONF. sacchetto	IMBALLO scatola
	<i>DIMENSION</i> mm	<i>CODE</i>	<i>PACKAGING</i> bag	<i>PACKAGING</i> box
	20 x 1/2"	107.86.22.0	10	80



COMBINAZIONE CURVA SORPASSO • KIT FOR CROSSOVER

art. <b>K29</b>	MISURA mm	CODICE	CONF. sacchetto	IMBALLO scatola
	<i>DIMENSION</i> mm	<i>CODE</i>	<i>PACKAGING</i> bag	<i>PACKAGING</i> box
	20	107.29.02.0	10	40







**CURVA DI SORPASSO • CROSSOVER**

art. <b>K90</b>	MISURA mm	CODICE	CONF. sacchetto	IMBALLO scatola
	DIMENSION mm	CODE	PACKAGING bag	PACKAGING box
	20	107.90.02.0	10	150
	25	107.90.02.5	10	100
	32	107.90.03.2	5	70



**MANICOTTO ELETTRICO • ELECTRIC SOCKET**

art. <b>K17</b>	MISURA mm	CODICE	CONF. sacchetto	IMBALLO scatola
	DIMENSION mm	CODE	PACKAGING bag	PACKAGING box
	20	107.17.02.0	10	80
	25	107.17.02.5	10	60
	32	107.17.03.2	10	40
	40	107.17.04.0	5	25
	50	107.17.05.0	2	16
	63	107.17.06.3	1	10
	75	107.17.07.5	1	5
	90	107.17.09.0	1	3
	110	107.17.09.5	1	2
	125	107.17.09.6	-	2



**RUBINETTO D'ARRESTO A VITONE C/ROSONE • STOP VALVE W/ ROSETTE**

art. <b>K50</b>	MISURA mm	CODICE	CONF. sacchetto	IMBALLO scatola
	DIMENSION mm	CODE	PACKAGING bag	PACKAGING box
	20	107.50.02.0	2	20
	20 Lungo • Long	107.50.12.0	2	20
	25	107.50.02.5	2	20
	25 Lungo • Long	107.50.12.5	2	16
	32	107.50.03.2	2	16
	32 Lungo • Long	107.50.13.2	2	16
<b>Solo corpo • Only body</b>				
	20	107.50.92.0	10	-
	25	107.50.92.5	10	-



>>> continua nella pagina seguente • continues on the next page

**RUBINETTO D'ARRESTO A VITONE C/ROSONE • STOP VALVE W/ ROSETTE**

art. <b>K50</b>	MISURA mm	CODICE	CONF. scatola	IMBALLO scatola
	DIMENSION mm	CODE	PACKAGING carton	PACKAGING box
>>> continua dalla pagina precedente • continues from the previous page				
	32	107.50.93.2	10	-
<b>Ricambi • Spare parts</b>				
	Vitone 1/2" c/farfalla • Setscrew 1/2" w/throttle	640.15.03.0	1	-
	Vitone 3/4" c/farfalla • Setscrew 3/4" w/throttle	640.15.03.1	1	-
	Vitone 1/2" lungo c/farfalla • Long setscrew 1/2" w/throttle	640.15.03.5	1	-
	Vitone 3/4" lungo c/farfalla • Long setscrew 3/4" w/throttle	640.15.03.6	1	-
	Cappuccio per K50 • Nipple for K50	640.04.00.2	1	-
	Rosone in ABS • Rosette in ABS	640.14.01.8	1	-
	Solo prolunga per K50 • Only extension for K50	640.18.00.3	1	-
<b>Prolunga e vitone • Extension</b>				
	20	107.59.00.1	-	-
	25	107.59.00.2	-	-



**RUBINETTO D'ARRESTO A VITONE C/MANIGLIA IN ABS CROMATO • STOP VALVE W/HANDLE IN ABS CHROMED**

art. <b>K50/M</b>	MISURA mm	CODICE	CONF. scatola	IMBALLO scatola
	DIMENSION mm	CODE	PACKAGING carton	PACKAGING box
	20 Lungo • Long	107.50.32.0	2	20
	25 Lungo • Long	107.50.32.5	2	16
	32 Lungo • Long	107.50.33.2	2	16





RUBINETTO D'ARRESTO A SFERA ESTRAIBILE C/ROSONE • *BALL VALVE W/ROSETTE*

art. **K51**

MISURA mm	CODICE	CONF.	IMBALLO scatola
<i>DIMENSION</i> mm	<i>CODE</i>	<i>PACKAGING</i>	<i>PACKAGING</i> box

20	107.51.02.0	1	-
25	107.51.02.5	1	-

Rubinetto d'arresto a sfera estraibile s/rosone • *Ball valve w/o rosette*

20	107.51.82.0	1	-
25	107.51.82.5	1	-



RUBINETTO D'ARRESTO A SFERA C/LEVA • *BALL VALVE W/LEVER ACTION*

art. **K53**

MISURA mm	CODICE	CONF. sacchetto	IMBALLO scatola
<i>DIMENSION</i> mm	<i>CODE</i>	<i>PACKAGING</i> bag	<i>PACKAGING</i> box

20	107.53.02.0	2	40
25	107.53.02.5	2	30
32	107.53.03.2	2	20
40	107.53.04.0	2	16
50	107.53.05.0	1	16
63	107.53.06.3	1	10
75	107.53.07.5	1	5



RUBINETTO D'ARRESTO A VITONE C/VOLANTINO • *GLOBE VALVE*

art. **K54**

MISURA mm	CODICE	CONF. sacchetto	IMBALLO scatola
<i>DIMENSION</i> mm	<i>CODE</i>	<i>PACKAGING</i> bag	<i>PACKAGING</i> box

20	107.54.02.0	5	100
25	107.54.02.5	5	100



RACCORDO PER FLANGIA • *FLANGE CONNECTION*

art. **K18**

MISURA mm	CODICE	CONF. sacchetto	IMBALLO scatola
<i>DIMENSION</i> mm	<i>CODE</i>	<i>PACKAGING</i> bag	<i>PACKAGING</i> box

75	107.18.07.5	1	-
90	107.18.09.0	1	-
110	107.18.09.5	1	-
125	107.18.09.6	1	-



MANICOTTO FLANGIATO • *FLANGED SOCKET*

art. **K19**

MISURA mm	CODICE	CONF. sacchetto	IMBALLO scatola
<i>DIMENSION</i> mm	<i>CODE</i>	<i>PACKAGING</i> bag	<i>PACKAGING</i> box

75	107.19.07.5	1	-
90	107.19.09.0	1	-
110	107.19.09.5	1	-
125	107.19.09.6	1	-



GOMITO 90° C/CODOLO E DADO FOLLE • *ELBOW 90° W/COUPLING*

art. **K25**

MISURA mm	CODICE	CONF. sacchetto	IMBALLO scatola
<i>DIMENSION</i> mm	<i>CODE</i>	<i>PACKAGING</i> bag	<i>PACKAGING</i> box

20 x 3/4"	107.25.32.0	10	80
25 x 1"	107.25.42.5	10	50
32 x 1.1/4"	107.25.53.2	5	30





GIUNTO C/CODOLO E DADO FOLLE • ADAPTOR W/COUPLING

art. **K15**



MISURA mm	CODICE	CONF. sacchetto	IMBALLO scatola
DIMENSION mm	CODE	PACKAGING bag	PACKAGING box
20 x 1/2"	107.15.22.0	10	80
20 x 3/4"	107.15.32.0	10	80
25 x 3/4"	107.15.32.5	10	60
25 x 1"	107.15.42.5	10	60
32 x 1.1/4"	107.15.53.2	5	35
40 x 1.1/2"	107.15.64.0	2	20
50 x 2"	107.15.75.0	1	12
63 x 2.1/2"	107.15.86.3	1	10

BOCCHETTONE IN OTTONE M/F • BRASS PIPE UNION M/F

art. **K96**



MISURA mm	DADO	CODICE	CONF. sacchetto	IMBALLO scatola
DIMENSION mm	SCREW	CODE	PACKAGING bag	PACKAGING box
1/2" x 1/2"	1"	107.96.22.0	10	-
3/4" x 3/4"	1.1/4"	107.96.32.5	10	-
1" x 1"	1.1/2"	107.96.43.2	5	-

BOCCHETTONE IN OTTONE C/CODOLO M • BRASS PIPE MALE UNION W/WELDING COUPLING

art. **K91**



MISURA mm	CODICE	CONF. sacchetto	IMBALLO scatola
DIMENSION mm	CODE	PACKAGING bag	PACKAGING box
25 x 3/4"	107.91.32.5	10	50
32 x 1"	107.91.43.2	5	40
40 x 1.1/4"	107.91.54.0	2	20
50 x 1.1/2"	107.91.65.0	1	14
63 x 2"	107.91.76.3	1	10

MANOPOLA CON TAPPO PER COLLAUDO IMPIANTI • KNOB FOR INSTALLATION TEST



MISURA mm	CODICE	CONF. sacchetto	IMBALLO scatola
DIMENSION mm	CODE	PACKAGING bag	PACKAGING box
1/2" M	107.99.98.7	10	100
3/4" M	107.99.98.8	10	80

BOCCHETTONE F/F • PLASTIC PIPE UNION 3 PCS. F/F

art. **K92**



MISURA mm	CODICE	CONF. sacchetto	IMBALLO scatola
DIMENSION mm	CODE	PACKAGING bag	PACKAGING box
20	107.92.02.0	10	100
25	107.92.02.5	10	50
32	107.92.03.2	5	40
40	107.92.04.0	2	20
50	107.92.05.0	1	14

SOLO PER IL TRASPORTO DI ACQUA FREDDA • ONLY FOR COLD WATER



DIMA PER LIVELLAMENTO GRUPPI • COPRAX WATER LEVEL

	CODICE
	CODE
	107.99.99.0



Tappo per dima • Only plug

	640.24.00.1
--	-------------

RASCHIETTO • SCRAPER

	CODICE
	CODE
	107.99.60.0



UTENSILE CALBRATORE • PEELING TOOL

MISURA mm	CODICE
DIMENSION mm	CODE
20 / 25	107.99.72.5
32 / 40	107.99.74.0
50 / 63	107.99.76.3
75	107.99.87.5
90	107.99.89.0
110	107.99.89.5



TAGLIATUBO • CUTTER

MISURA mm	CODICE
DIMENSION mm	CODE
fino • until Ø 40	107.99.99.9



fino • until Ø 63	107.99.99.8
-------------------	-------------



PN 10 fino - until Ø 110		
PN 16 fino - until Ø 75	Ø 50-110	107.99.99.5
PN 20 fino - until Ø 63		



PN 10 fino - until Ø 125		
PN 16 fino - until Ø 110	Ø 110-125	107.99.99.6
PN 20 fino - until Ø 90		

Tagliatubo a lama tonda - Round blade

POLIFUSORE A 3 POSIZIONI C/SUPPORTO, MATRICI E CASSETTA  
3 POSITIONS WELDING MACHINE W/TOOLS

	CODICE
	CODE
• polifusore con cassetta, supporto e matrici ø mm 20 - 25 - 32 welding machine with case, support and dies ø mm 20 - 25 - 32	107.99.96.0
• solo polifusore con supporto only welding machine	107.99.90.0
• solo cassetta only case	107.99.91.1



Informazioni tecniche

- Alimentazione 220 Volt - 50 Hertz - Monofase
- Potenza assorbita 700 Watt
- Piastra a 3 posizioni per misure dal ø mm 16 al ø mm 32
- Temperatura di lavoro ca. 260 °C con termostato incorporato
- Dimensioni cassetta: 48x25x13 cm

Technical information

- Voltage 220 Volt - 50 Hertz - Single phase
- Power absorption 700 Watt
- Heating plate for 3 dimensions from ø mm 16 to ø mm 32
- Operating temperature ca. 260 °C
- Dimensions case: 48x25x13 cm



POLIFUSORE A 1 POSIZIONE C/SUPPORTO E CASSETTA • 1 POSITION WELDING MACHINE W/CASE

	CODICE
	CODE
<ul style="list-style-type: none"> <li>• polifusore con supporto e cassetta welding machine with metal case</li> </ul>	107.99.90.1



**Informazioni tecniche**

- Alimentazione 220 Volt - 50 Hertz - Monofase
- Potenza assorbita 500 Watt
- Piastra a 1 posizione per misure dal  $\varnothing$  mm 16 al  $\varnothing$  mm 32
- Temperatura di lavoro ca. 260 °C con termostato incorporato
- Dimensioni cassetta: 48x25x13 cm

**Technical information**

- Voltage 220 Volt - 50 Hertz - Single phase
- Power absorption 500 Watt
- Heating plate for 1 dimension from  $\varnothing$  mm 16 to  $\varnothing$  mm 32
- Operating temperature ca. 260 °C
- Dimensions case: 48x25x13 cm

MATRICE PER POLIFUSORE • WELDING TOOL

MISURA mm	CODICE
DIMENSION mm	CODE
20	107.99.93.1
25	107.99.93.2
32	107.99.93.3
40	107.99.93.4
50	107.99.93.5
63	107.99.93.6
75	107.99.93.7
90	107.99.93.8
110	107.99.93.9
125	107.99.94.2



MATRICE PER RACCORDO A SELLA K47 • DIE FOR WELD-IN SADDLE K47

MISURA Ø derivazione / tubo	CODICE
DIMENSION Ø way / pipe	CODE
20 / 50	107.97.62.0
20 / 63	107.97.72.0
20 / 75	107.97.82.0
20 / 90	107.97.92.0
25 / 50	107.97.62.5
25 / 63	107.97.72.5
25 / 75	107.97.82.5
25 / 90	107.97.92.5
32 / 63	107.97.73.2
32 / 75	107.97.83.2
32 / 90	107.97.93.2
32 / 110	107.97.93.3
40 / 90	107.97.94.0
40 / 110	107.97.94.1



MATRICE RIPARAFORI • REPAIRING WELDING TOOL


MISURA mm	CODICE
DIMENSION mm	CODE
7	107.99.94.0







SALDATRICE DA BANCO PRISMA • *BENCH WELDER PRISMA*

	CODICE	
	CODE	
	saldatrice Prisma SG - ø 20 mm - ø 90 mm <i>bench welder Prisma SG - ø 20 mm - ø 90 mm</i>	107.99.97.7
	saldatrice Prisma 125 - ø 25 mm - ø 125 mm <i>bench welder Prisma 125 - ø 25 mm - ø 125 mm</i>	107.99.97.8


**Informazioni tecniche**

- Alimentazione 230 Volt - 50 Hertz - Monofase
- Potenza assorbita: 1000 W (Prisma SG)- 1400 W (Prisma 125)
- Temperatura di lavoro ca. 260 °C - regolazione electr. interna
- Dimensioni: Prisma SG cm 76x66,5x49  
Prisma 125 cm 80x146x135
- Peso: Prisma SG kg 54  
(inclusa cassa per Prisma 125 kg 152 trasporto)

**Technical information**

- Voltage 230 Volt - 50 Hertz - Single phase
- Power absorption: 1000 W (Prisma SG)- 1400 W (Prisma 125)
- Operating temperature ca. 260 °C
- Dimensions: Prisma SG cm 76x66,5x49  
Prisma 125 cm 80x146x135
- Weight: Prisma SG kg 54  
(packing included) Prisma 125 kg 152

SALDATRICE PER MANICOTTI ELETTRICI • *WELDING MACHINE FOR ELECTRO COUPLES*

	CODICE	
	CODE	
	saldatrice per manicotti elettrici <i>welding machine for electro couples</i>	107.99.97.0

**Informazioni tecniche**

- Alimentazione 220 Volt ± 10% - 50 Hertz
- Tensione di uscita max 24 Volt
- Potenza assorbita 1000 Watt
- Dimensioni cm 30x20x22
- Peso kg 16
- La saldatrice opera automaticamente previa selezione del diametro di lavorazione

**Technical information**

- Voltage 220 Volt ± 10% - 50 Hertz
- Output power max 24 Volt
- Power absorption 1000 Watt
- Dimensions cm 30x20x22
- Weight kg 16
- The machine is automatic operating under preselection of used pipe size